



Bruce Trail
CONSERVANCY

BTC Seed Orchards

Presented by Lyndsey Wilkerson
February 8th, 2024



Our Mission:

Preserving a ribbon of wilderness, for everyone, forever

Our vision:

The Bruce Trail secured within a permanently protected natural corridor along the Niagara Escarpment

Native plants play an essential role in healthy ecosystems. Using native species to repair damaged landscapes is a critical strategy for slowing climate change and species loss

What is a Seed Orchard

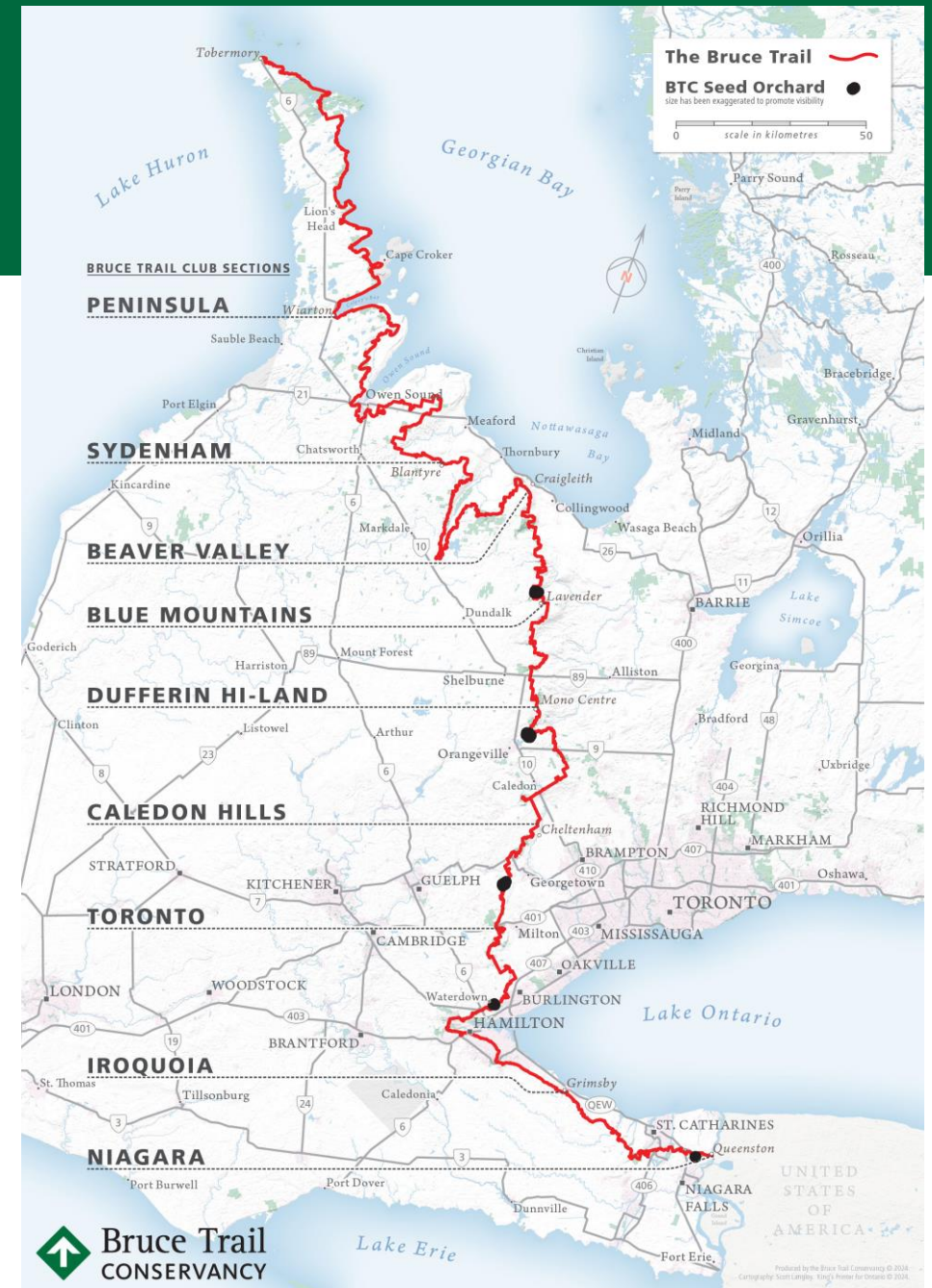
- A seed orchard is a managed plantation of specifically selected plants to be used for the mass production of genetically verified seeds to create seeds or plants to be used in future restoration projects





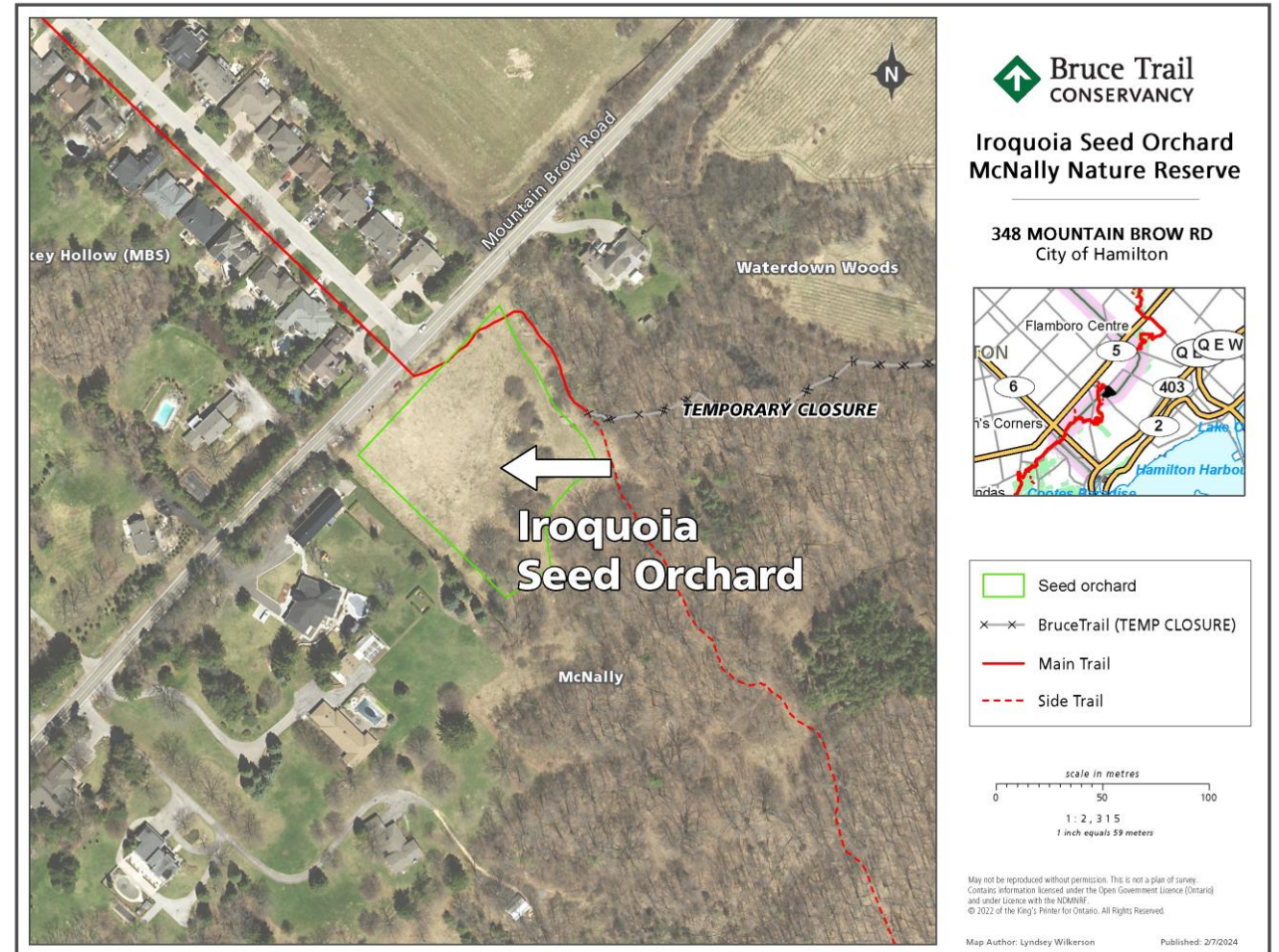
BTC Seed Orchard Locations

- Iroquoia - installed 2022
- Niagara - installed 2023
- Caledon - installed 2023
- Toronto (2024)
- Dufferin Hi-land (2024)
- Blue Mountains (2024)



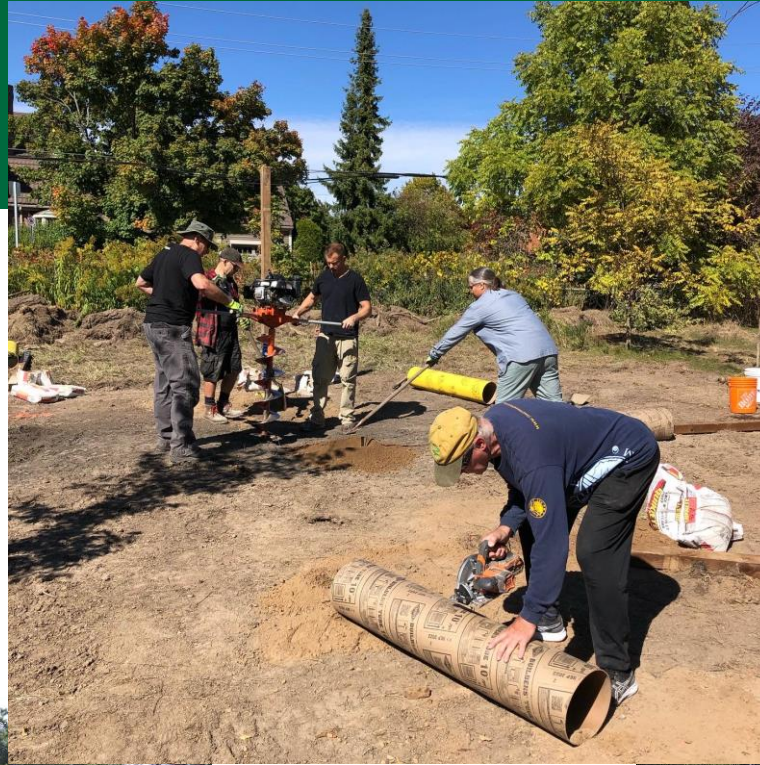
Iroquoia - McNally Nature Reserve

- Using the vacant grassland space near the road
- Former farm field
- Some invasive/non native species present



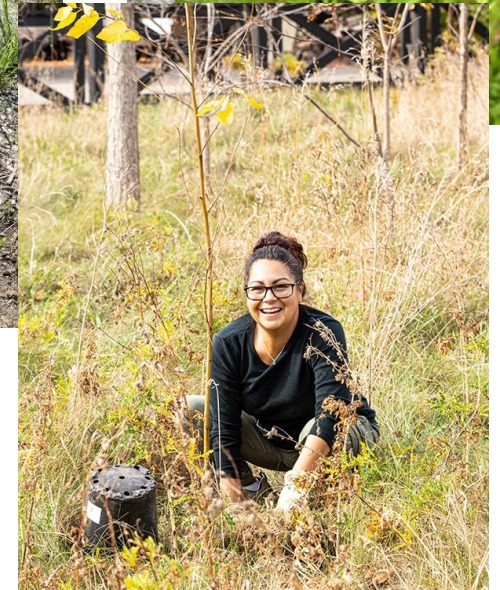


Bruce Trail
CONSERVANCY



Species Selected for the Iroquoia Seed Orchard

- Big blue stem
- Little blue stem
- Indian grass
- Wild bergamot
- Pale purple coneflower
- False sunflower
- Harebell
- Evening primrose
- Butterfly milkweed
- Black eyed Susan
- Side oats gramma
- New Jersey Tea
- Spicebush
- Serviceberry
- Paper birch
- Eastern cottonwood
- Chokecherry
- American chestnut



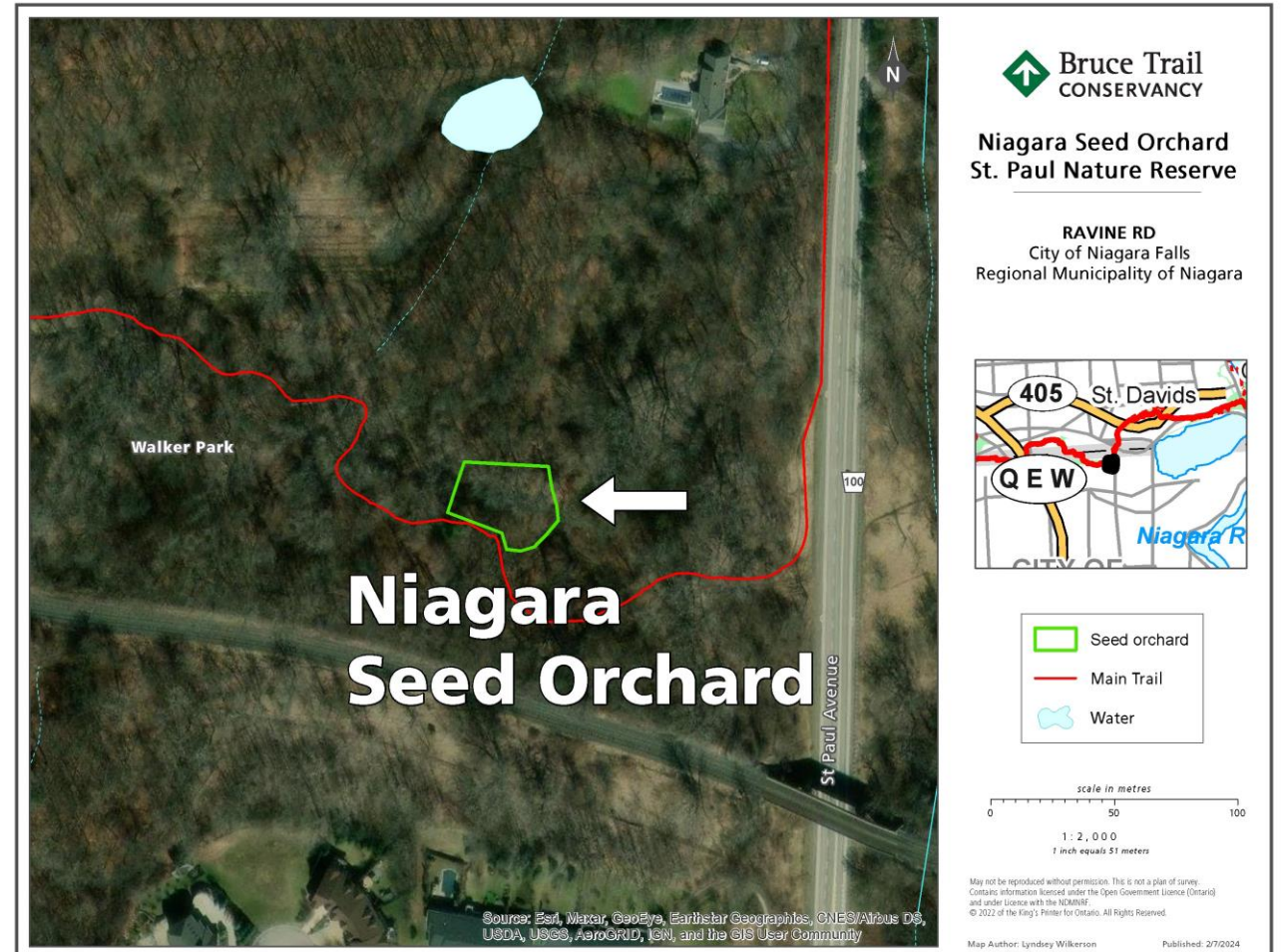


Bruce Trail
CONSERVANCY



Niagara - St. Paul Nature Reserve

- Former invasive species site
- Forest understory ecosystem
- Rich, moist soil and well shaded





Bruce Trail
CONSERVANCY





Species Selected for the Niagara Seed Orchard

- Blue vervain
- Jack in the Pulpit
- Mayapple seeds*
- Blue cohosh seeds*
- False Solomon's seal seeds



- Paw paw
- Spicebush
- Snowberry
- Elderberry*
- Red elderberry

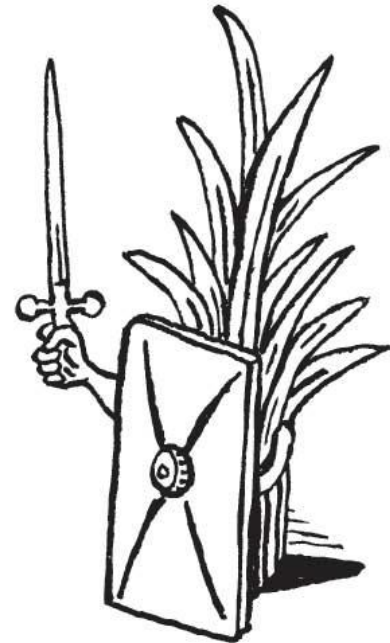


- Bottle brush grass
- Virginia waterleaf
- Canada mayflower
- Running strawberry bush



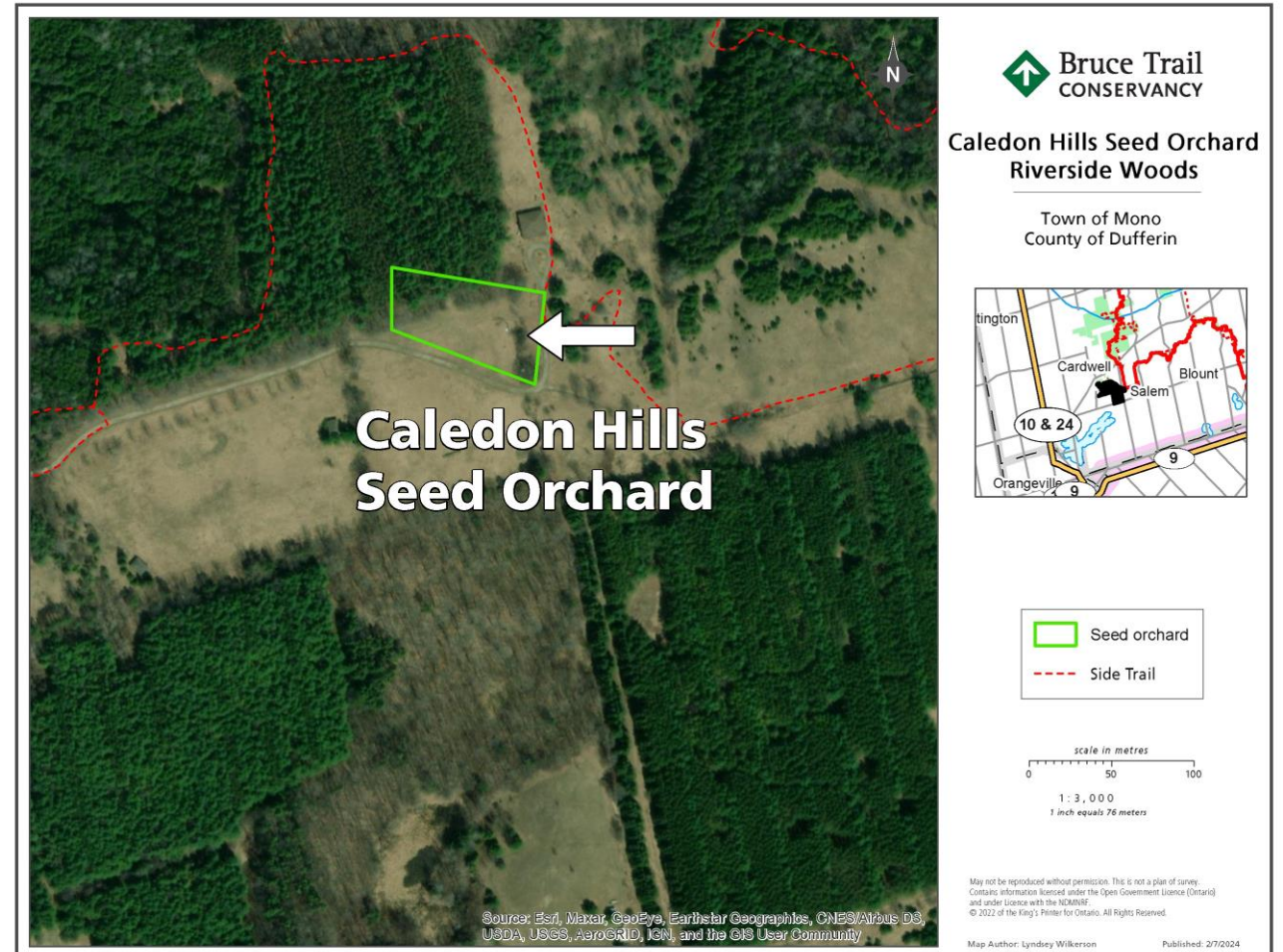
Fighting Back Against Invasive Species

- Mayapple vs garlic mustard
- Blue cohosh vs Japanese stiltgrass
- Elderberry vs buckthorn



Caledon Hills Club Riverside Woods Nature Reserve

- Former baseball field
- Dry, rocky soil





Bruce Trail
CONSERVANCY



Species Selected for the Caledon Hills Seed Orchard

- Common milkweed
- Big bluestem
- Indian grass
- Pale purple coneflower
- New England aster
- Ground cherry seeds

- Red Oak
- Hazelnut
- Hackberry
- Ninebark

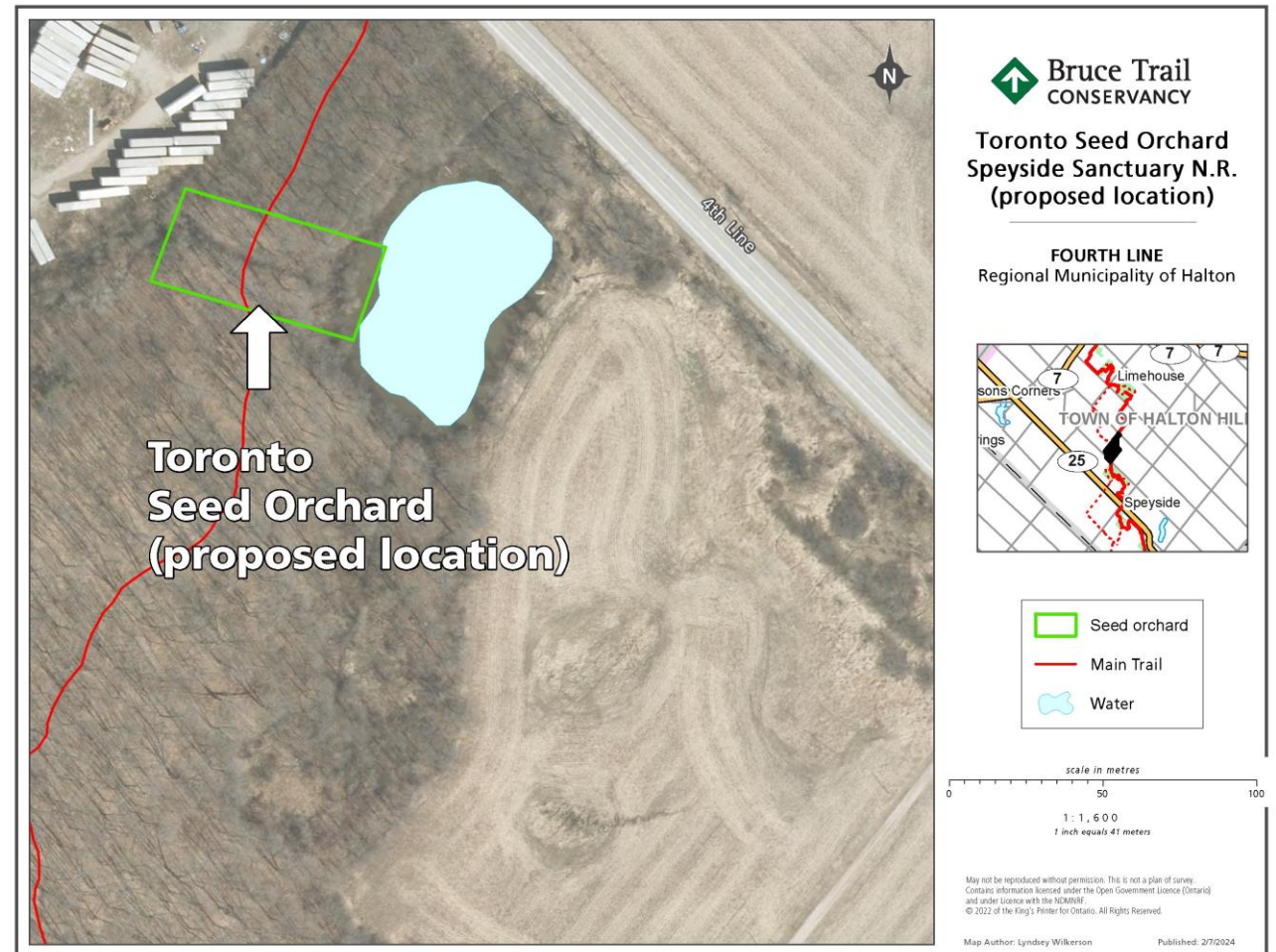


- Pearly everlasting
- Wild bergamot
- New jersey tea
- Black eyed susan



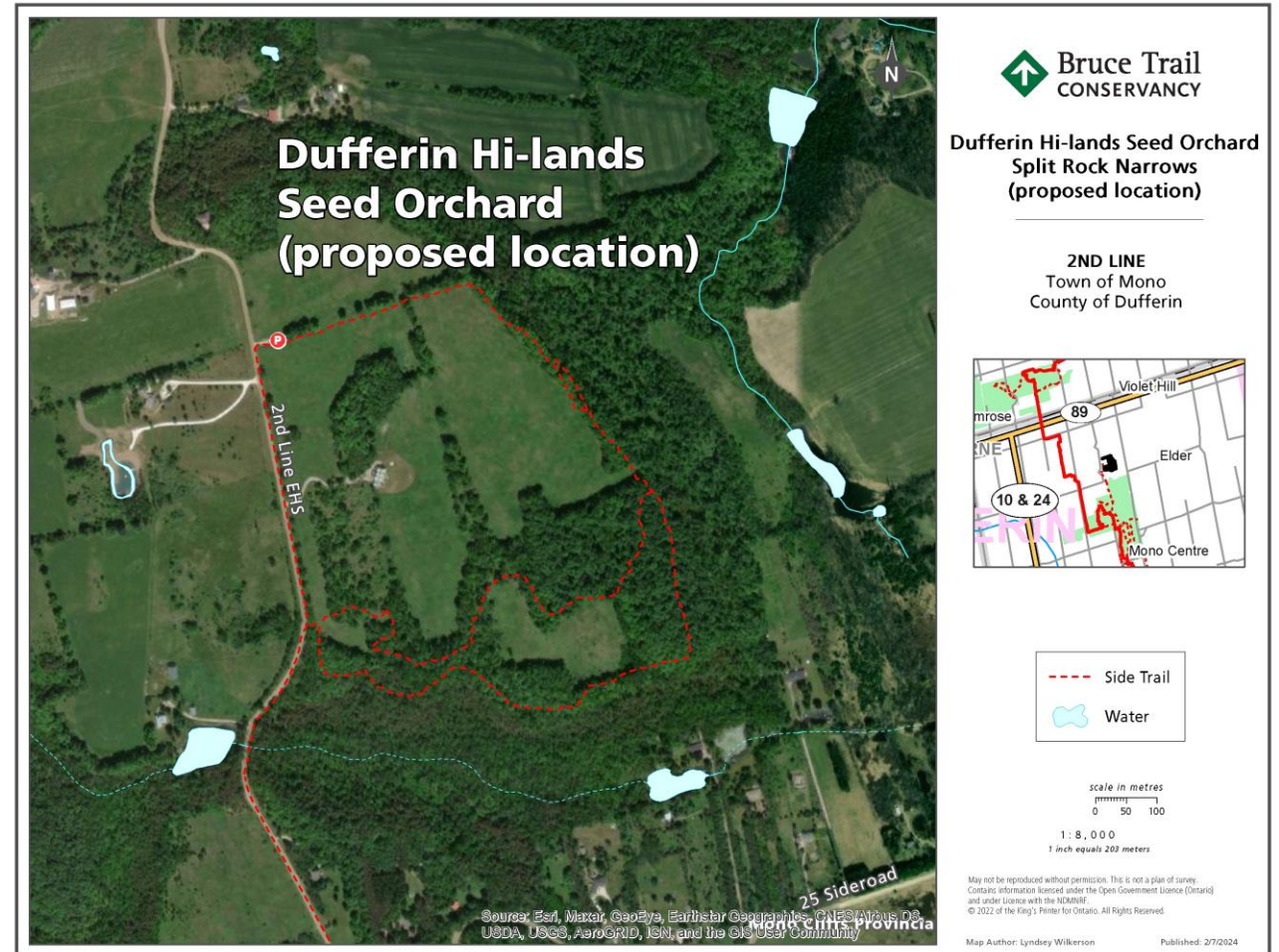
Toronto Club - Speyside Sanctuary N. R.

- Moist woods
- Close proximity to a year round pond



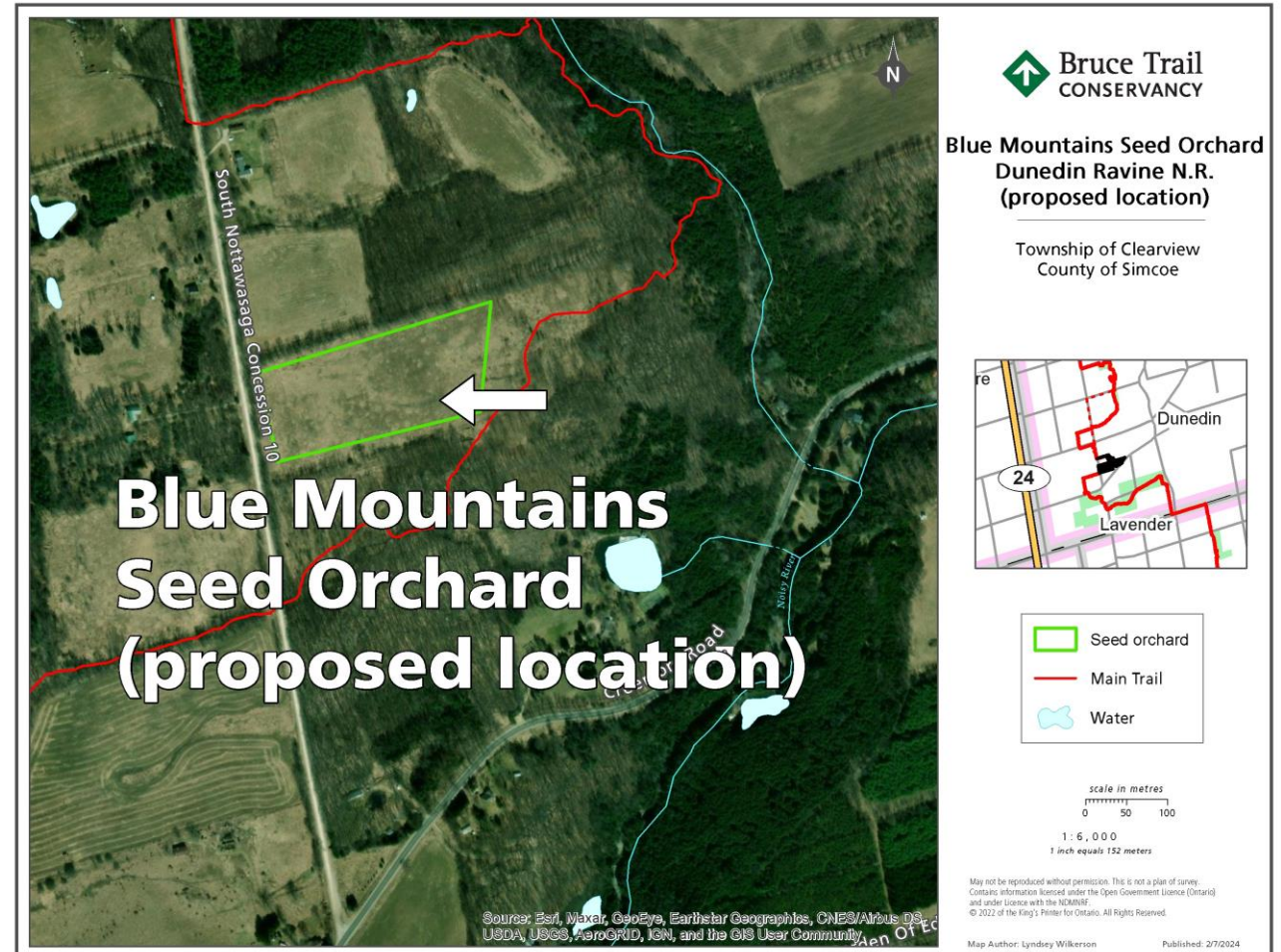
Dufferin Hi-lands Club - Split Rock Narrows

- Forest understory habitat
- Also open for other location suggestions!



Blue Mountains Club - Dunedin Ravine

- Looking for an old farm field, hot and dry location
- Other possible locations include Avalon Meadows





Issues Encountered

- Invasive species
- Rabbits and deer
- Vandalism
- Insect damage





How Can Volunteers Help:

- Replacing plants or species if necessary
- Maintaining a weed free area
- Watering
- Harvesting seeds/plants at the correct time in the fall
- Prepping the seed beds for winter
- Processing collected seeds and properly storing seeds over the winter
- Create your own seed orchard at home!





Bruce Trail
CONSERVANCY

Questions?

